

# **Factory Profile**

---

**Pawla Knitwear (Pvt) Ltd.**

**100% Export Oriented Readymade Knit  
Garments Manufacturing Company.**

**Website: [www.pawlaknitwearbd.com](http://www.pawlaknitwearbd.com)**

# OUT SIDE VIEW



# COMPANY INFORMATION

<b>Name of the Company and Main Office :</b>	<b>: PAWLA KNITWEAR PVT. LTD.</b>
Year of Establishment	: 1996
Company Status	: Private Limited Company .
Company Address	: Isdair, Fatullah, Narayanganj. Narayanganj-1420, Bangladesh.
Telephone Numbers	(+880-2) 7633330, 7630641
Fax	: (+880-2) 7643325
<b>Corresponding Bank</b>	<b>Sonali Bank Ltd.</b> Narayanganj Corporate Branch. Narayanganj. Current A/C.no. <b>33005158</b> Swift Code: <b>BSONBDDHNR</b>
<b>Number of Floors</b>	07
<b>Total Space</b>	<b>7 Storied Building (Partially Eight) Total Space 39,916 Sqft .</b>
<b>Production Capacity</b>	<b>25,000pcs. (Basic T-Shirt) per day.</b>
<b>Production Manpower</b>	<b>1000 Workers:</b> Male: abt.400 worker Female: abt. 600 worker <b>(We do not allow child labors.)</b>

# CONTACT DETAILS

## Managing Director

**Sarder Kamrul Ur Rashid (Babu).  
Managing Director**

Mobile: (+88) 01713003672

E-mail : [babu@pawlaknitwearbd.com](mailto:babu@pawlaknitwearbd.com)

Sarder Iqbal ur Rashid.

Director.

Sarder Mizan ur Rashid.

Director.

## Deputy General Manager

**Mr. Jahangir Alam Salim.  
Deputy General Manager**

Mobile: (+88) 01711682321

E-mail : [salim@pawlaknitwearbd.com](mailto:salim@pawlaknitwearbd.com)

## Merchandising Manager

**Hasan Ahmed Khan.  
Merchandising Manager**

Mobile: (+88) 01711906900

(+88) 01611906900

E-mail : [hasan@pawlaknitwearbd.com](mailto:hasan@pawlaknitwearbd.com)

# SOME OF OUR PRODUCTS

**Product Type**

All type of knit garments like **T-Shirt, Polo Shirt, Sweat Shirt, Legging, Jacket Pyjama, Muscle Shirt, Hoodie, Jacket, etc.**



# SOME OF OUR PRODUCTS



# SOME OF OUR PRODUCTS



# Some of Our Products

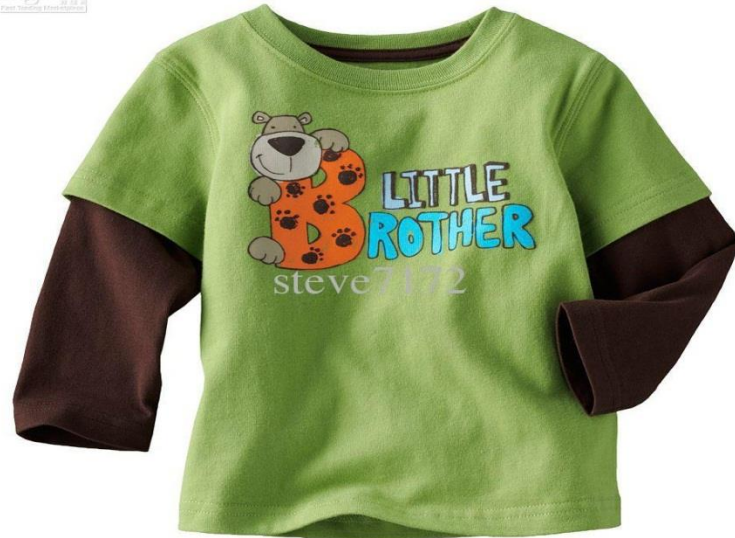




# Some of Our Products



CHS  
Printed on Demand



# Social Compliance



**Factory is well equipped to meet up the requirements for National and International Social Compliance.**

# Certification

Associated With	:BKMEA, BGMEA
Social Compliances	: BSCI DBID 7071, Sedex , Accord ID 9906
Certificates	Oeko-tex ( 13.HBD. 26425 HOHENSTEIN)
Accord	: Amber mark and all others certificates are under Processing.



# Buyer Name

## Major Customers

LIDL.

TRAFIC.

AUCHAN.

SOHO.

JOLO FASHION.

GOR FACTORY S.A.

PRIMARK

ZEEMAN.

# Work Force

<b>Sewing General Operator</b>	<b>28 Persons</b>
Sewing Asst. Operator (Male)	30 Persons
Sewing Asst. Operatpr-01	124 Persons
Sewing Asst. Operator (Female-02)	123 Persons
Sewing Machine Operator-01	139 Persons
Sewing Machine Operator-02	101 Persons
Finishing Assistant	21 Persons
Finishing Polyman	38 Persons
Finishing Foldingman	20 Persons
Finishing Packingman	14 Persons
Finishing Ironman	31 Persons
Assistant Cutter	13 Persons

# Work Force

<b>Cutting Operator</b>	20 Persons
<b>Quality Inspector</b>	104 Persons
<b>Quality Controler</b>	12 Persons
<b>Knitting Operator</b>	12 Persons
<b>Dyeing &amp; Knitting Staff</b>	10 Persons
<b>Sample section</b>	12 Persons
<b>Cleaner</b>	28 Persons
<b>Loader</b>	16 Persons
<b>Security Guard</b>	10 Persons
<b>Maintenance Section</b>	11 Persons
<b>General Staff</b>	17 Persons
<b>Production Staff</b>	45 Persons
<b>Office Staff</b>	31 Persons
<b>Others Staff</b>	17 Persons
<b>Total =</b>	<b>= 1,000 Persons</b>



# Quality System

Fabric and Accessories are inspected based on AQL 4.0 System. Spread check, Cut Blocks are Checked 100% in the cutting section. In sewing process, important components are checked 100% by the process checkers and checkers at the end of line.

Roaming QC conducts skip bundle check based on AQL 2.5

In Finishing section, after Sewing 100% Garments are Checked from inside and subsequently measurement checks are done for important of body after iron.

Random inspection of the packed goods is done based on AQL2.5 twice a day.

# Warehouse : Fabrics Keeping





# Warehouse : Trims Keeping



# Cutting Section



# Sewing Section



# Quality Checking



# Finishing Section



# Needle Detection



# Packing Section



# Knitting Section





# Knitting Machines

Dia	G G	Quantity
21, 22, 24, 25	24	04 Set.
30 (Rib) Lycra.	18	01 Set.
<b>Total = 05 Set. (KNITTING CAPACITY: 700KGS/DAY)</b>		

Name of the factory

C. S. Knit.

BSCIC Hosiery I/E, Shasangaon, Fatullah,  
Narayanganj, Bangladesh.

(A sister cocern of pawla knitwear (pvt) ltd.

## MACHINE DETAILS

MACHINE NAME

QUANTITY

4 Track System S/J, D/J, Pique Polo, 2 yarn  
Fleece, Lacost French terry with Design.  
Rib; Interlock all kinds of design Rib &  
Interlock.

11pcs

**Total = 11pcs. (Knitting capacity : 2,700kgs/Day)**

# Dyeing Section



# Dyeing Factory

## Dyeing

### Name of the Factory

Azad Rifat Fibres (Pvt) Ltd.  
Ramarbag, Kutubpur,  
Fatullah, Narayangonj.  
(A sister cocern of pawla knitwear (pvt) ltd.

### MACHINE DETAILS

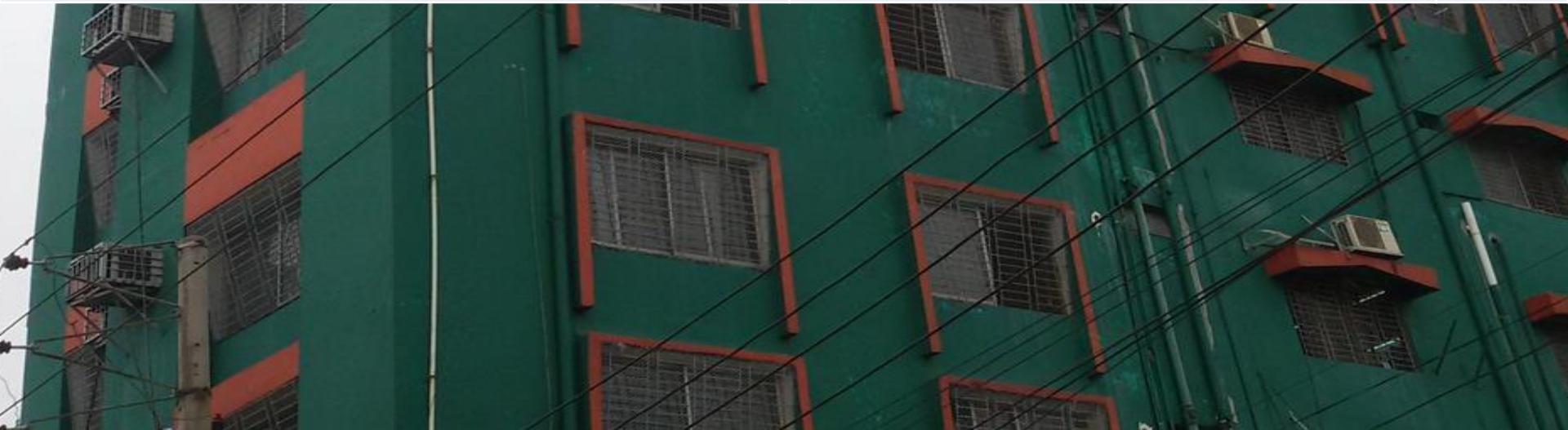
#### A. LAB MACHINE

SL. NO.	Description Machine	Brand	Origin	Capacity
01.	Dyeing Machine 02 (Two) Set	Starlet	Korea	12 pot x 2
02.	Washing Machine 01 Set	Starlet	Korea	12 pot
03.	Wascator 01 Set	S D L	U. K.	5 - 10 kgs
04.	Tumble Dryer 01 Set	S D L	U. K.	5 - 10 kgs
05.	Oven Dryer	S D L	U. K.	5 - 10 kgs
06.	Croco Meter	S D L	U. K.	-
07.	Light Box-Available Light Sources	S D L	U. K.	-
08.	Spectra Photometer (Computerized color machine) 01 (one) Set	Mc.Beth	U.S.A.	-
09.	Digital Balance 01 (One) Set	Kern	Germany	300 Gm

# Dyeing Factory

## B. BATCH SECTION

Description Of Machine	Nos / Quantity
Fabric Turning Machine	02 Sets
Weighing Balance	02 Sets
Over Lock (Sewing)	02 Sets



# Dyeing Factory

## Description Of Machine

SL.NO.	Machine Name	Brand	Origin	Qty.	Capacity
01.	Atmospheric Dyeing Machine	Fong's	China	1 Set	60 Kgs
02.	Atmospheric Dyeing Machine	Fong's	China	1 Set	250 Kgs
03.	Atmospheric Dyeing Machine	Fong's	China	1 Set	500 Kgs
04.	Atmospheric Dyeing Machine	Fong's	China	1 Set	1500 Kgs
05.	High Temperature Dyeing Machine	Fong's	China	1 Set	250 Kgs
06.	High Temperature Dyeing Machine	Fong's	China	1 Set	1100 Kgs
07.	Atmospheric Dyeing Machine	Tong-Geng	Taiwan	1 Set	400 Kgs
08.	Atmospheric Dyeing Machine	Tong-Geng	Taiwan	2 Set	1200 Kgs
09.	Atmospheric Dyeing Machine	Tong-Geng	Taiwan	1 Set	1000 Kgs
10.	Atmospheric Dyeing Machine	Tong-Geng	Taiwan	1 Set	1200 Kgs
11.	High Temperature Dyeing Machine	Canlar	Turkey	2 Set	50 Kgs
12.	High Temperature Dyeing Machine	Canlar	Turkey	2 Set	300 Kgs
13.	High Temperature Dyeing Machine	Canlar	Turkey	2 Set	600 Kgs
14.	High Temperature Dyeing Machine	Canlar	Turkey	2 Set	900 Kgs
15.	High Temperature Dyeing Machine	Canlar	Turkey	2 Set	1200 Kgs

# Dyeing Factory

Sl. No.	Description Of Machine	Brand	Origin	Qty	Capacity
01.	Flat-Bed Printing Machine 12 Color 110"Working Width	Intoma 264C	Taiwan	1 Set	6000 Kgs
02.	Printing Designe Engriver (Injector)	Intoma 264C	Taiwan	1 Set	
03.	Senter (8 Chamber)	Icomatex	Spain	1 Set	1600 Kgs
04.	Senter (6 Chamber)	Tube - Tex	U.S.A.	1 Set	1000 Kgs
05.	Slitting	I.Kuang	Taiwan	1 Set	6000 Kgs
06.	Auto Folding and Stitching	Hong Chyi	Taiwan	1 Set	6000 Kgs
07.	Back Sewing	MTG	Italy	1 Set	5000 Kgs
08.	Back Sewing	Hong Chyi	Taiwan	1 Set	4500 Kgs
09.	Sueding & Pitch Finish	Lamperti	Italy	1 Set	6000 Kgs
10.	Raising / Brushing	I. Kuang	Taiwan	1 Set	4000 Kgs
11.	Compactor Open Width with PinChain	Ferraro	Italy	1 Set	8000 Kgs
12.	Compactor (Shoe Type) Open Width	Tube-Tex	U.S.A.	1 Set	8000 Kgs
13.	Compactor (Shoe Type) Tubler	Tube-Tex	U.S.A.	1 Set	6000 Kgs
14.	Steam Dryer (6 Chamber)	Fong's	China	1 Set	12000 Kgs
15.	Calendar (Felt type)	Dong Nam	S.Korea	1 Set	6000 Kgs

# Dyeing Factory

Sl. No	Description Of Machine	Brand	Origin
01.	Gas Genator - 950 K.V.A. 01 Set	Cater Pillar	U.S.A.
02.	Air Compressor(4000 Ltrs/Minutex2 Unit)	Kaeser	Germany
03.	Water Pump summer Sear Pump 01.(Size-14" x 6")No-01	K.S.B.	India
04.	Steam Boiler(6.3 Tons)Incliding Condensef Water Recovery System.	Hurst	U.S.A.
05.	Water Softening Plan- 100000 Ltrs/Hours	-	India
06	Effluent Treatment Plant	-	India

# Printing Section

	Printing	
Name of the Factory	Sarker Design & Printing All kinds of Garments Quality Print (Oeko Tex Certified 14, HBD, 39761) Section-2, Plot: 1-8/9 4 <sup>th</sup> floor), Block-K, Rupnagar I/A, Mirpur, Dhaka-1216. A Sister Concern Of Pawla Knitwear (Pvt) Ltd.	





# Sewing Machineries

Machines	Brand	Quantity
01. Plain Machine	Brother Brand.	100Set.
02. Over Lock (4 Thread).	Pegasus Brand.	75 Set.
03. Back-Tape	Pegasus Brand.	03 Set.
04. Cylinder Bed (Flatlock).	Pegasus Brand.	40 Set.
05. Cylinder Bed(Fabric and Thread Auto trimmer).	Pegasus Brand.	16 Set.
06. Button Hole	Brother Brand.	02 Set.
07. Button Stitch.	Brother Brand.	02 Set.
08. Feed of the Arm	Brother Brand.	01 Set.
09. Elastic attachment (Waist).	Kansai Special.(Japan)	01 Set.
10. Picot	Kansai Special.(Japan)	01 Set.
11. Cloth Cutting	K.M. (Japan).	04 Set.
12. Rib Cutting	TSSM	04 Set.
13. Gas Boiler	-----	03 Set.
14. Vacuum Iron Table.	-----	48 Set.
15. Steam Iron.	-----	48 Set.

A multi-story building with a green facade and orange horizontal accents. The building has many windows with metal grilles. The text "THANK YOU" is overlaid in large, white, 3D-style letters across the center of the image. Power lines are visible in the foreground.

THANK YOU